

## MODULAR BLOCK SYSTEM

- Speeds up project completion.
- Enables you to build houses without the need for cast-in-place columns or beams.
- Reduces the use of formworks and concrete.
- Capable of bearing load.
- Manufactured according to unforgiving ASTM standards.

### FEATURES & BENEFITS :

- **As fast as 7 days** - that's how fast you can finish masonry work on a 30-square-meter, one-story, single detached house when you use Jackbilt modular blocks.
- **Partial grouting only** on core holes with vertical reinforcement.
- **Less plastering needed** compared to regular hollow blocks. Jackbilt blocks have a smooth surface finish.
- **Highly compacted** with low water absorption rate.



### STRETCHER BLOCK

More commonly known as a hollow block. Used for wall partitions, fences, and retaining walls. Its cores have ample space for rebar, electrical, and plumbing conduits.

**Compressive strength: 700 - 1500 psi.**



### L-CORNER BLOCK

Unique to the 140 mm series. Provides an interlock at corners, making the wall-to-wall joint sturdier.

**Compressive strength: 1000 psi.**



### BEAM BLOCK

A reinforcing unit used with other beam blocks to strengthen walls. Needed in structures in areas prone to strong winds or earthquakes. Also serves as a lintel beam on top of doors, windows, and other wall openings.

**Available Strength : 1000 psi**



### SEALED-END BLOCK

Designed mainly for partial grouting. The end base is intentionally sealed.

**Compressive strength: 700 psi.**



### HALF BLOCK

Saves you time and labor. Eliminates the need to cut hollow blocks in half for the endings of walls, doors, and windows.

**Compressive strength: 700 & 1000 psi.**



### LIGHTWEIGHT BLOCK

45% lighter than non-load concrete blocks. Reduces foundation costs.

**Compressive strength: 500 & 700 psi.**

# JACKBILT HOLLOW BLOCKS TECHNICAL DATA

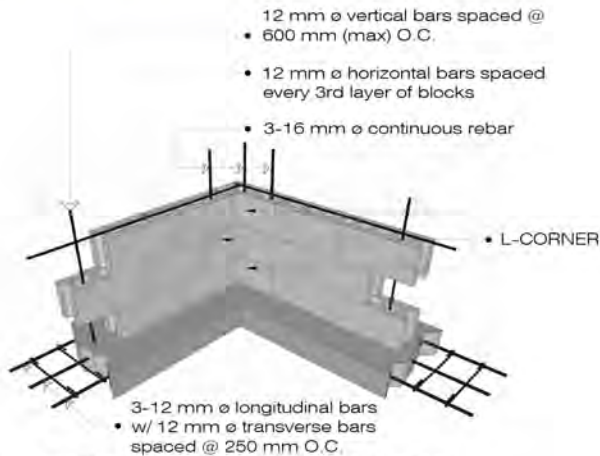


SPECIFICATION	DIMENSIONS			WEIGHT	MORTAR VOLUME		
	LENGTH	WIDTH	HEIGHT		SIDE CORE	INNER CORE	TOTAL
	mm	mm	mm				
<b>4" STRETCHER BLOCK</b>							
LIGHTWEIGHT	390	90	190	6.00	0.000189	0.000424	0.001651
700 psi	390	90	190	11.10	0.000189	0.000424	0.001651
1000 psi	390	90	190	11.16	0.000189	0.000424	0.001651
1200 psi	390	90	190	12.47	0.000189	0.000424	0.001651
1500 psi	390	90	190	12.47	0.000189	0.000424	0.001651
<b>6" STRETCHER BLOCK</b>							
LIGHTWEIGHT	390	140	190	7.40	0.000097	0.001070	0.003151
700 psi	390	140	190	14.70	0.000097	0.001070	0.003151
1000 psi	390	140	190	14.80	0.000097	0.001070	0.003151
1200 psi	390	140	190	14.90	0.000097	0.001070	0.003151
1500 psi	390	140	190	15.00	0.000097	0.001070	0.003151
<b>8" STRETCHER BLOCK</b>							
700 psi	390	190	190	18.30	0.000286	0.002329	0.005230
1000 psi	390	190	190	18.40	0.000286	0.002329	0.005230
1200 psi	390	190	190	18.60	0.000286	0.002329	0.005230
1500 psi	390	190	190	18.80	0.000286	0.002329	0.005230
<b>4" SEALED-END BLOCK</b>							
700 psi	390	90	190	11.70	0.000189	0.000390	0.001550
<b>6" SEALED-END BLOCK</b>							
700 psi	390	140	190	14.80	0.000097	0.000985	0.003151
<b>4" HALF BLOCK</b>							
700 psi	190	90	190	5.70	0.000189	0.000622	0.000811
1000 psi	190	90	190	5.80	0.000189	0.000622	0.000811
<b>6" HALF BLOCK</b>							
700 psi	190	140	190	7.50	0.000097	0.001734	0.001831
1000 psi	190	140	190	7.80	0.000097	0.001734	0.001831
<b>6" BEAM BLOCK</b>							
1000 psi	390	140	190	12.90	-	0.001970	0.003945
<b>6" L-CORNER BLOCK</b>							
1000 psi	390	140	190	18.45	-	0.001659	0.003318

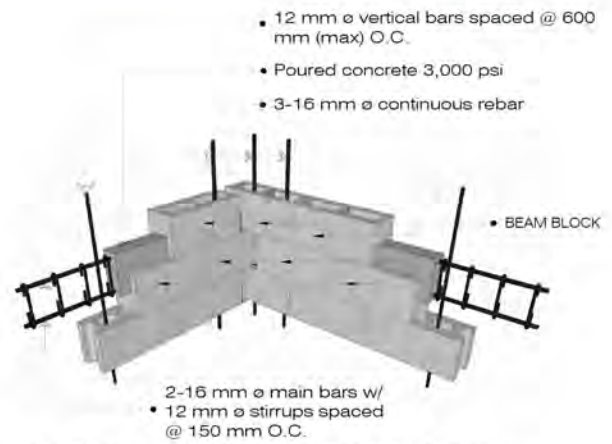
- Jackbilt modular blocks meet specifications of ASTM C90-75 and the Product Standard Agency (PSA).
- Blocks have a +/- 3 mm tolerance for all dimensions as permitted by ASTM standards for masonry blocks.

**STRONGER • FASTER • BETTER**

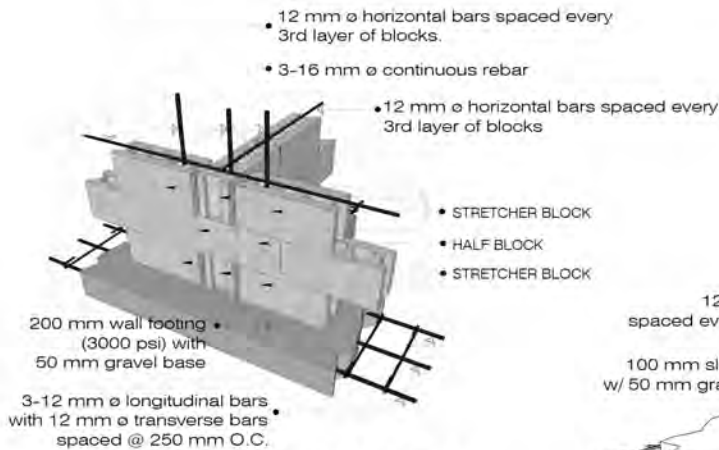
# TYPICAL CONNECTION DETAILS



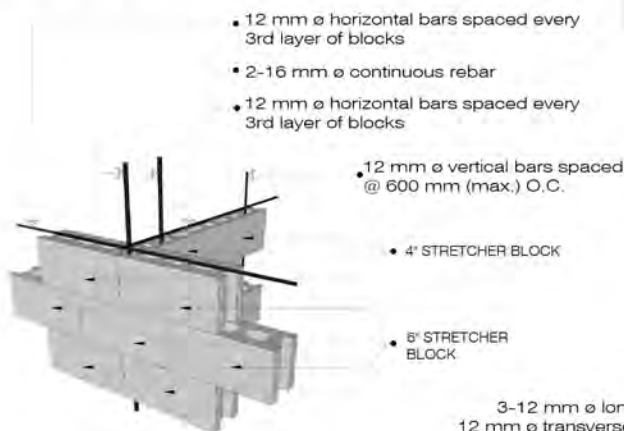
L-CORNER CONNECTION DETAIL



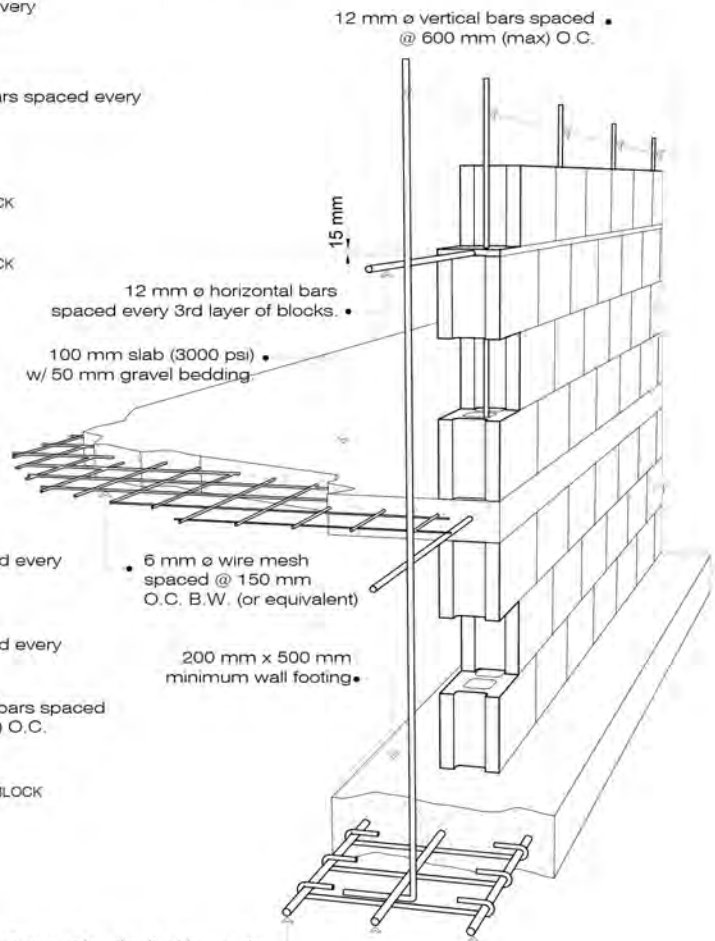
BEAM BLOCK CONNECTION DETAIL



6"x6" THK. STRETCHER BLOCK INTERLOCK CONNECTION DETAIL

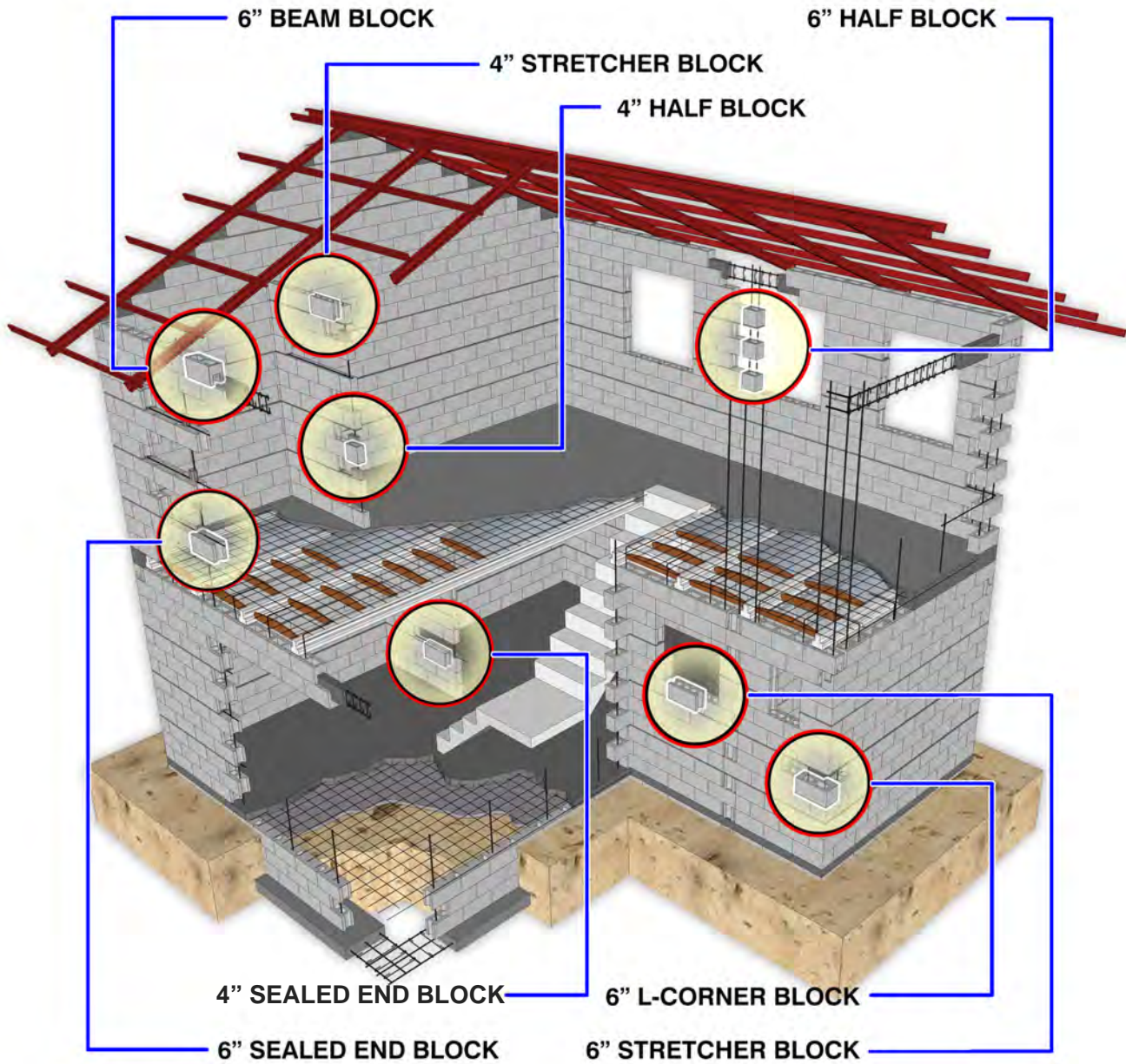


6"x4" THK. STRETCHER BLOCK CONNECTION DETAIL



TYPICAL MODULAR WALL FOOTING SECTION

**STRONGER • FASTER • BETTER**



**NOTE :**

Compressive strength range is from 700 to 1500 psi. Blocks with higher compressive strengths are available through special arrangement. Please consult your Jackbilt Building Specialist.